

- Use block elastomer, elastomer can be replaced without moving the drive and the driven device
- Standard metric intermediate spacer length for industrial process pumps.
- Torsional flexibility, maintenance-free.
- Compact structure, light mass, small moment of inertia.
- Damp impact and vibration.
- Axial plug-in, fail-safety.
- Good dynamic properties.
- Refer to document No. 04.107 for installation, operation and maintenance instructions.

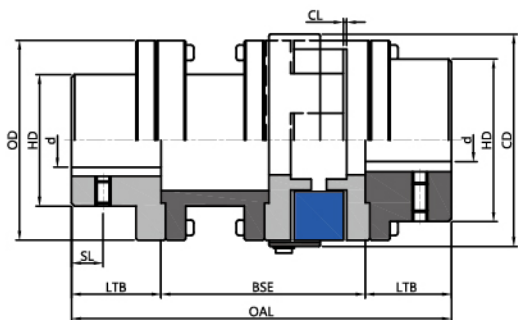
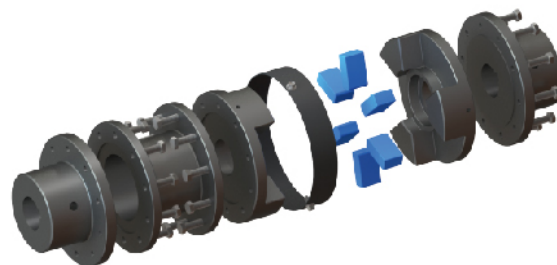


Fig 04.37



04.27

| Size | Rated Torque | | | Bore Diameter d mm | | Dimension mm | | | | | |
|-----------|--------------|-----------|-----------|--------------------|------|----------------|--------|-----|-----|-----------|-----------|
| | Synthal | TPU | Hytrel | Min. | Max. | CD | OD | HD | LTB | BSE(REF.) | OAL(REF.) |
| | Torque Nm | Torque Nm | Torque Nm | | | | | | | | |
| RRCS-276 | 532 | 798 | 1330 | 25 | 75 | 165.10 | 156.97 | 130 | 60 | 181 | 301 |
| RRCS-280 | 782 | 1173 | 1955 | 30 | 80 | 198.37 | 190.50 | 130 | 60 | 181 | 301 |
| RRCS-295 | 1279 | 1918.5 | 3197.5 | 30 | 95 | 242.82 | 231.65 | 160 | 70 | 181 | 321 |
| RRCS-2955 | 2132 | 3198 | 5330 | 30 | 105 | 242.82 | 231.65 | 160 | 75 | 181 | 331 |
| RRCS-300 | 3047 | 4570.5 | 7617.5 | 30 | 105 | 272.00 | 251.00 | 180 | 80 | 181 | 341 |
| RRCS-350 | 4308 | 6462 | 10770 | 30 | 115 | 323.00 | 302.00 | 200 | 90 | 181 | 361 |

- D is the bore diameter, the metric cylindrical bore executes GB3852-2107 standard, tolerance H7, flat keyway, also executes GB/T1095-2003 standard, tolerance JS9. The inch bore implements the AGMA9002-C14 standard, the bore is a clearance fit, and the keyway is a commercial grade.
- Hexagon socket set screw with cup point, comply with, GB/T80-2007, hardness level 45H. TA indicates the tightening torque (unit: Nm).